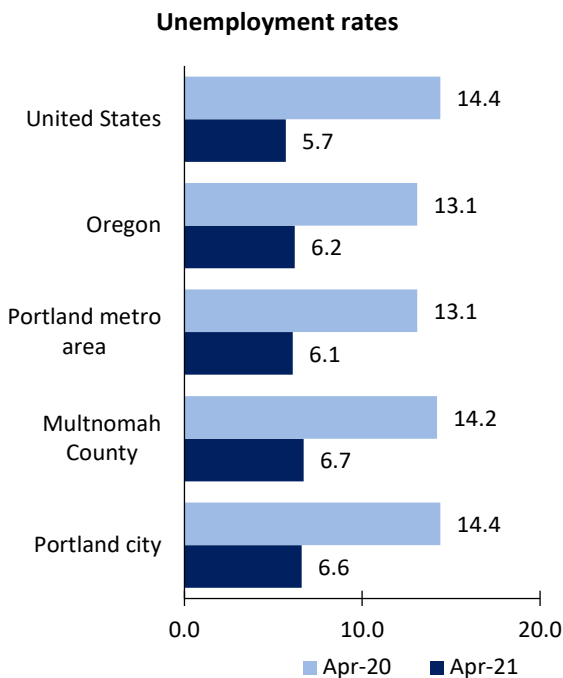


# Portland Area Economic Summary

Updated June 07, 2021

This summary presents a sampling of economic information for the area; supplemental data are provided for regions and the nation. Subjects include **unemployment, employment, wages, prices, spending, and benefits**. All data are not seasonally adjusted and some may be subject to revision. Area definitions may differ by subject. For more area summaries and geographic definitions, see [www.bls.gov/regions/economic-summaries.htm](http://www.bls.gov/regions/economic-summaries.htm).

## Unemployment rates for the nation and selected areas

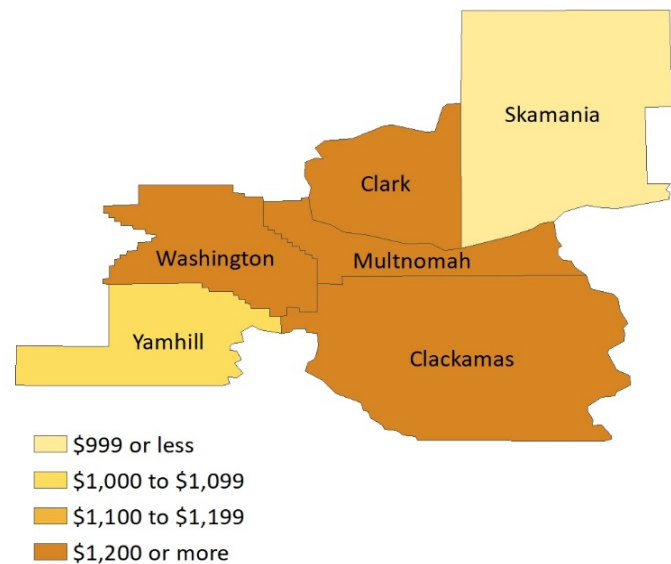


Source: U.S. BLS, Local Area Unemployment Statistics.

## Average weekly wages for all industries by county

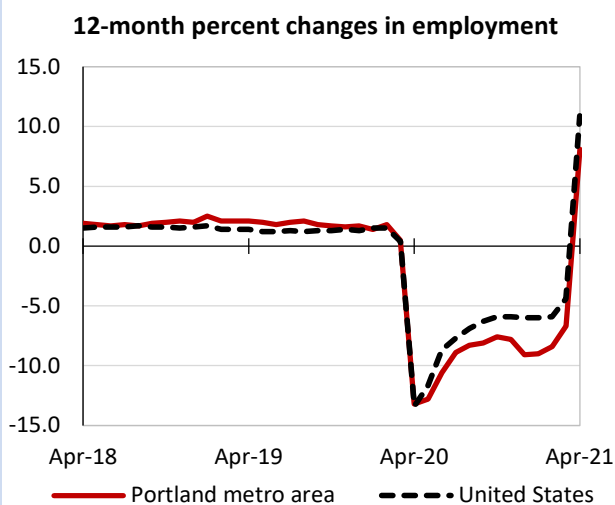
Portland metro area, fourth quarter 2020

(U.S. = \$1,339; Area = \$1,423)



Source: U.S. BLS, Quarterly Census of Employment and Wages.

## Over-the-year changes in employment on nonfarm payrolls and employment by major industry sector



Source: U.S. BLS, Current Employment Statistics.

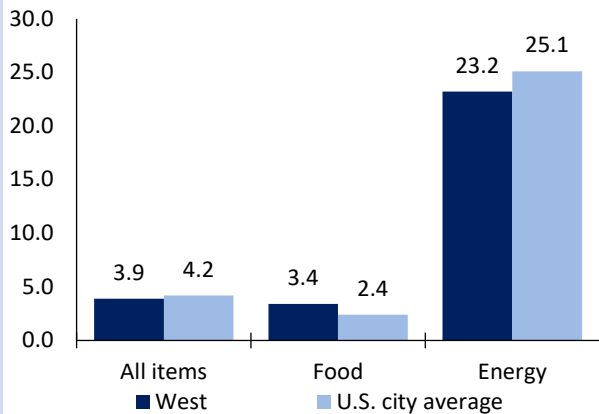
Portland metro area employment (number in thousands)	Apr. 2021	Change from Apr. 2020 to Apr. 2021	
		Number	Percent
Total nonfarm	1,149.7	86.0	8.1
Mining and logging	1.1	-0.1	-8.3
Construction	72.2	5.0	7.4
Manufacturing	119.0	0.7	0.6
Trade, transportation, and utilities	219.9	22.3	11.3
Information	25.2	0.8	3.3
Financial activities	71.2	0.1	0.1
Professional and business services	188.2	13.1	7.5
Education and health services	180.2	13.6	8.2
Leisure and hospitality	90.3	29.4	48.3
Other services	38.7	6.7	20.9
Government	143.7	-5.6	-3.8

Source: U.S. BLS, Current Employment Statistics.



Over-the-year change in the prices paid by urban consumers for selected categories

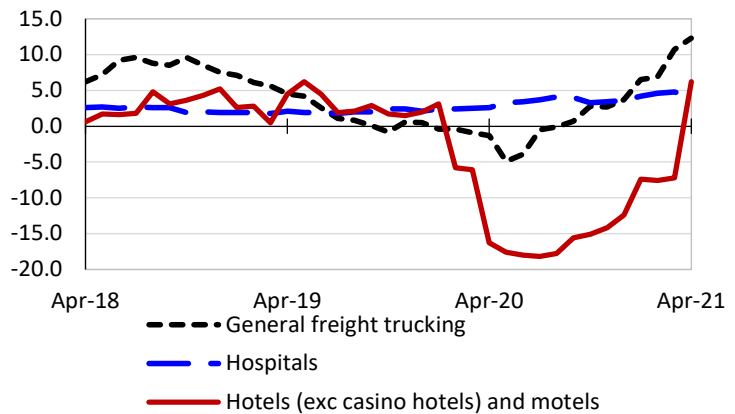
12-month percent change in CPI-U, April 2021



Source: U.S. BLS, Consumer Price Index.

Over-the-year changes in the selling prices received by producers for selected industries nationwide

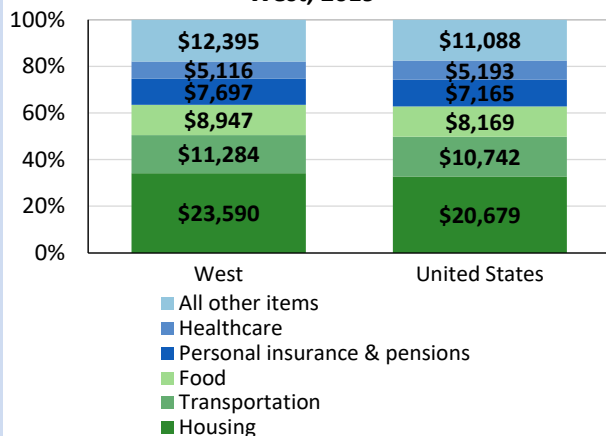
12-month percent changes in PPI



Source: U.S. BLS, Producer Price Index.

Average annual spending and percent distribution for selected categories

Average annual expenditures, United States and West, 2019



Source: U.S. BLS, Consumer Expenditure Survey.

Average hourly wages for selected occupations

Occupation	Portland metro area	United States
All occupations	\$29.74	\$27.07
Financial managers	65.29	72.84
Human resources managers	58.71	64.70
Registered nurses	47.45	38.47
Accountants and auditors	38.49	39.26
Chefs and head cooks	28.58	28.24
Construction laborers	23.09	20.67

Source: U.S. BLS, Occupational Employment Statistics, May 2020.

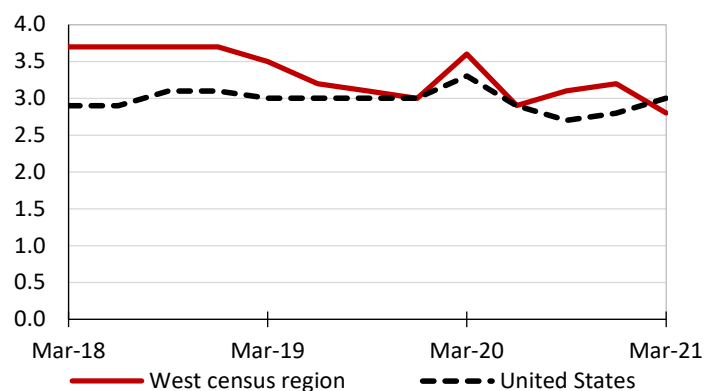
Employer costs per hour worked for wages and selected employee benefits by geographic division

Private industry, December 2020	West census region	United States
Total compensation	\$40.19	\$36.23
Wages and salaries	28.28	25.48
Total benefits	11.91	10.74
Paid leave	3.04	2.69
Vacation	1.53	1.38
Supplemental pay	1.28	1.25
Insurance	3.12	2.81
Retirement and savings	1.33	1.25
Legally required benefits	3.14	2.75

Source: U.S. BLS, Employer Costs for Employee Compensation.

Over-the-year changes in wages and salaries

12-month percent changes in ECI



Source: U.S. BLS, Employment Cost Index.

